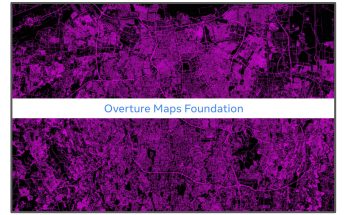
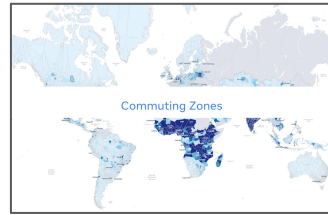
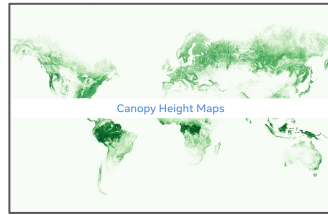
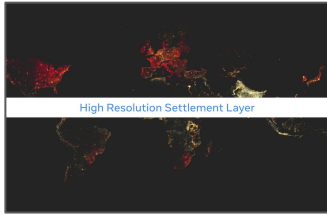




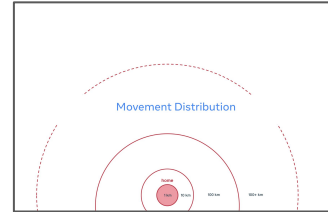
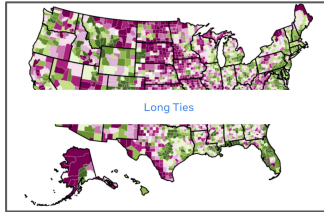
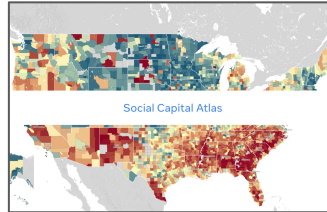
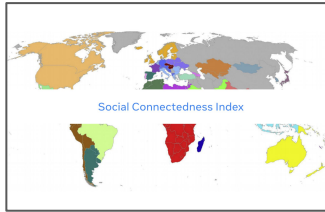
20th Caribbean Internet Governance Forum  
& 3rd Caribbean Youth Internet Governance Forum

Alex Pompe  
Research Manager - Data for Good

Built with AI

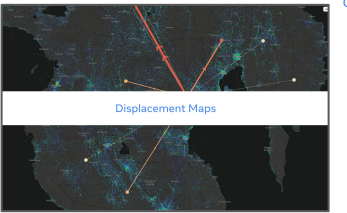
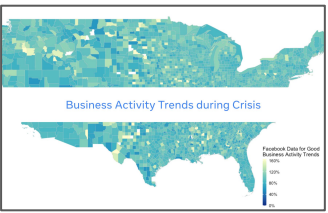
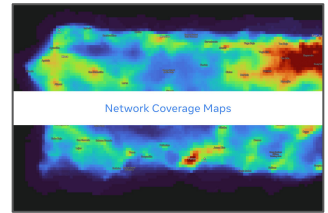
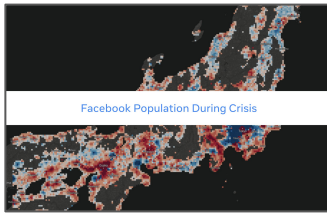


Social Capital



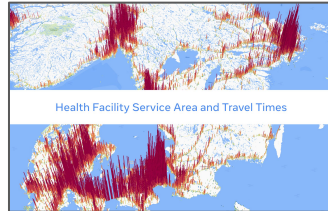
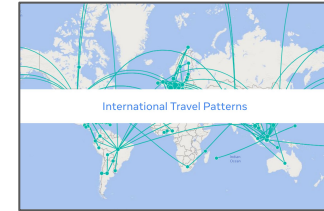
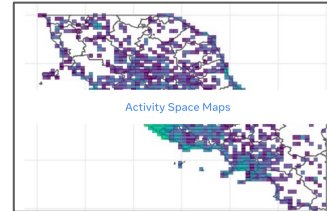
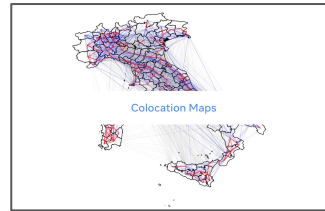
Public

Crisis Response



Controlled Access

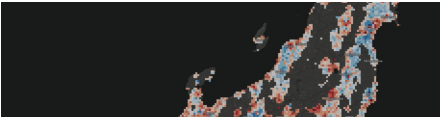
Public Health



# Baseline / Normal Times



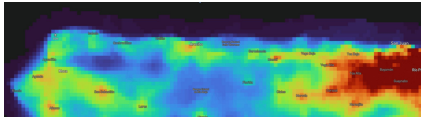
# How has a Crisis Affected...



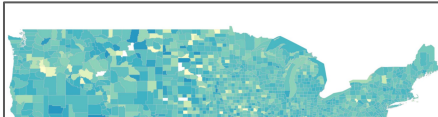
... Population Density?



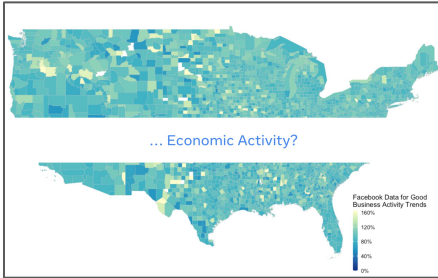
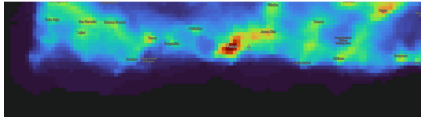
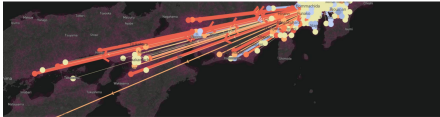
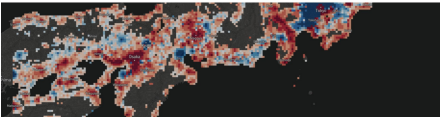
... Population Mobility?



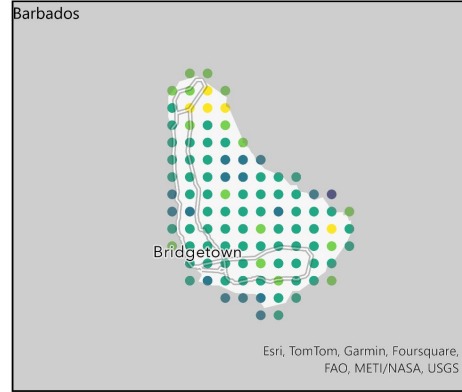
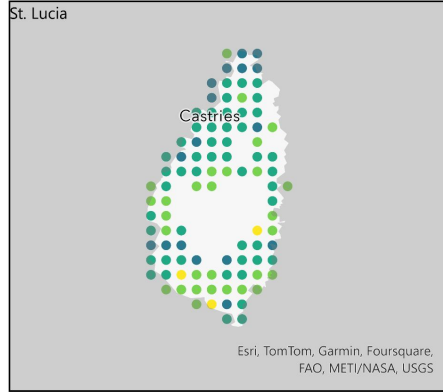
... Network Coverage?



... Economic Activity?



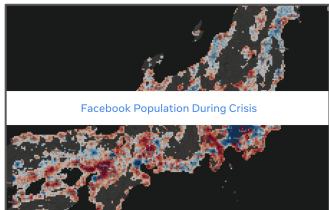
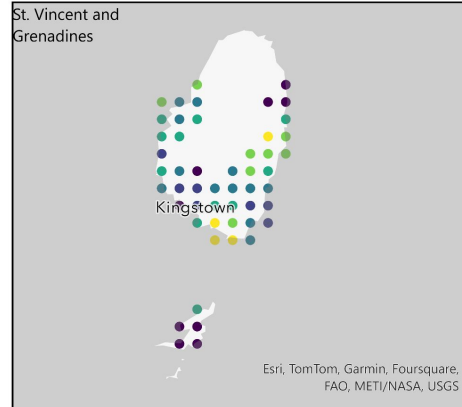
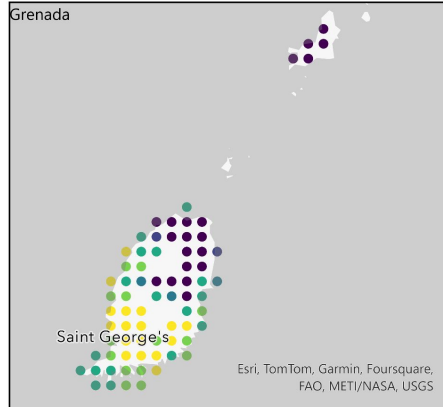
# Hurricane Beryl 2024:



Change in Z-Score of FB Population

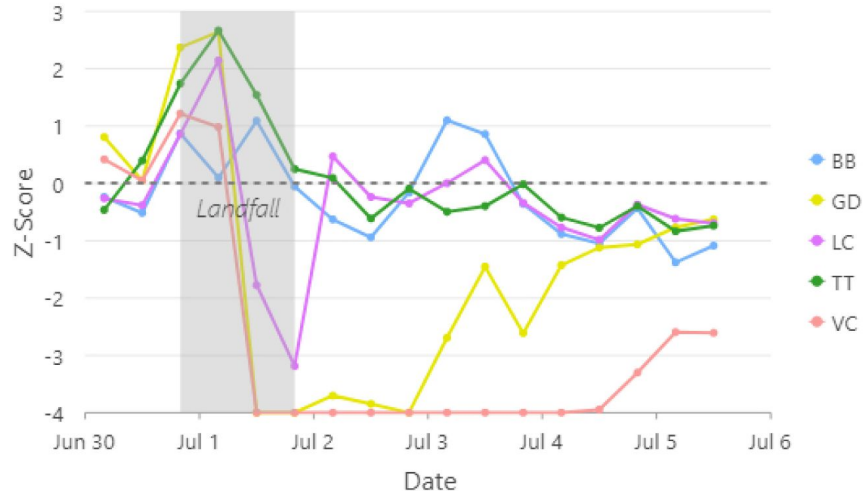
z\_score

- > 1.5 Std. Dev.
- 0.50 - 1.5 Std. Dev.
- 0.50 - 0.50 Std. Dev.
- 1.5 - -0.50 Std. Dev.
- 2.5 - -1.5 Std. Dev.
- < -2.5 Std. Dev.

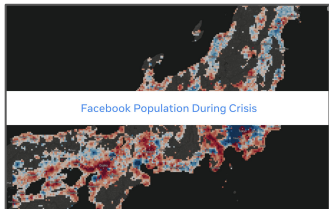


# Hurricane Beryl 2024:

**Median Z-Score of Population Change Relative to 90-Day Pre-Beryl Baseline**



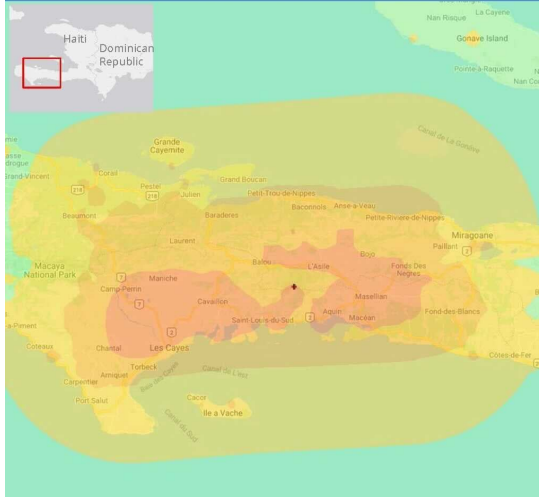
Data Source: Data for Good at Meta: BB = Barbados, GD = Grenada; LC = Saint Lucia; TT = Trinidad and Tobago; VC = Saint Vincent and the Grenadines



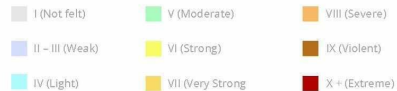
# Haiti Earthquake 2021

## Earthquake M7.2 - Haiti: Estimated Shaking Intensity Impact Analysis

14AUG2021 0829 Local (1229UTC)

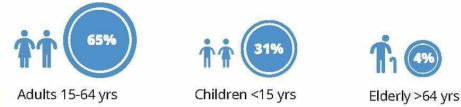


Estimated shaking intensity



### MAXIMUM POTENTIAL POPULATION EXPOSURE

**822,516**  
people exposed to shaking intensity of VII (Very Strong) and above



### TOTAL CAPITAL EXPOSURE

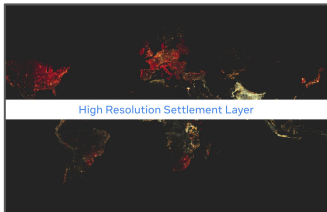


**\$1.83 billion**

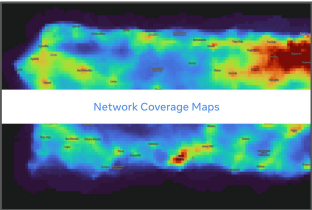


Capital exposure is the estimated cost to rebuild in the worst affected areas.

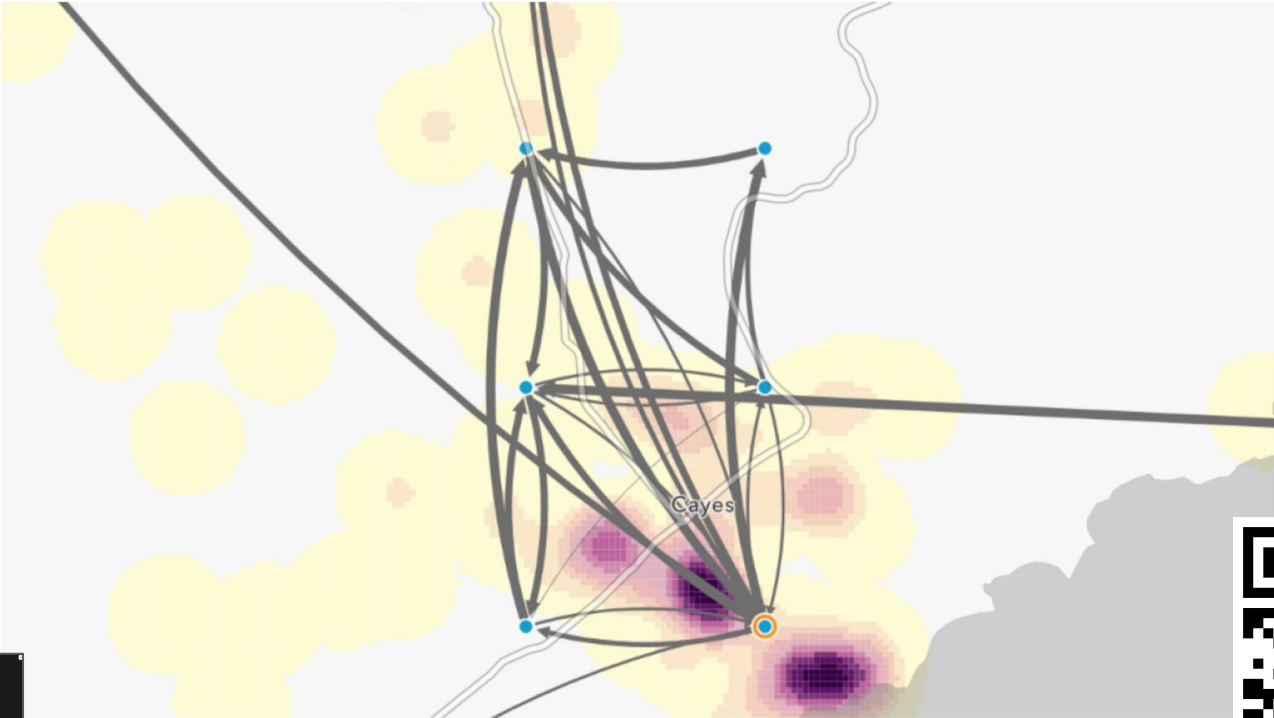
### BREAKDOWN OF POTENTIAL NEEDS



# Haiti Earthquake 2021



# Haiti Earthquake 2021



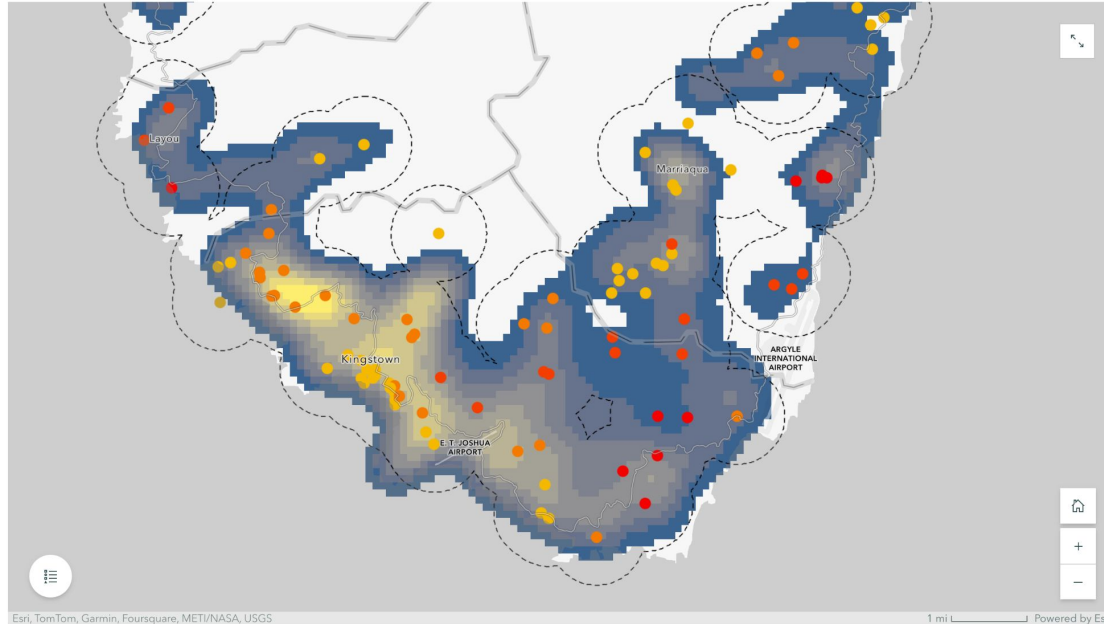
GIS map showing population movement after the August 14, 2021 earthquake in Haiti. (Direct Relief)



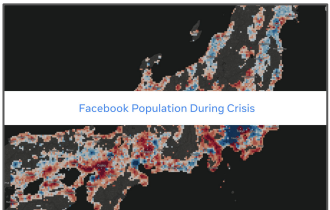
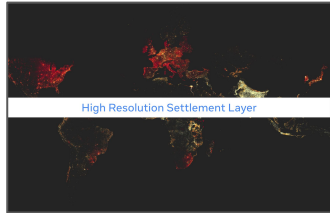
Facebook Movement During Crisis



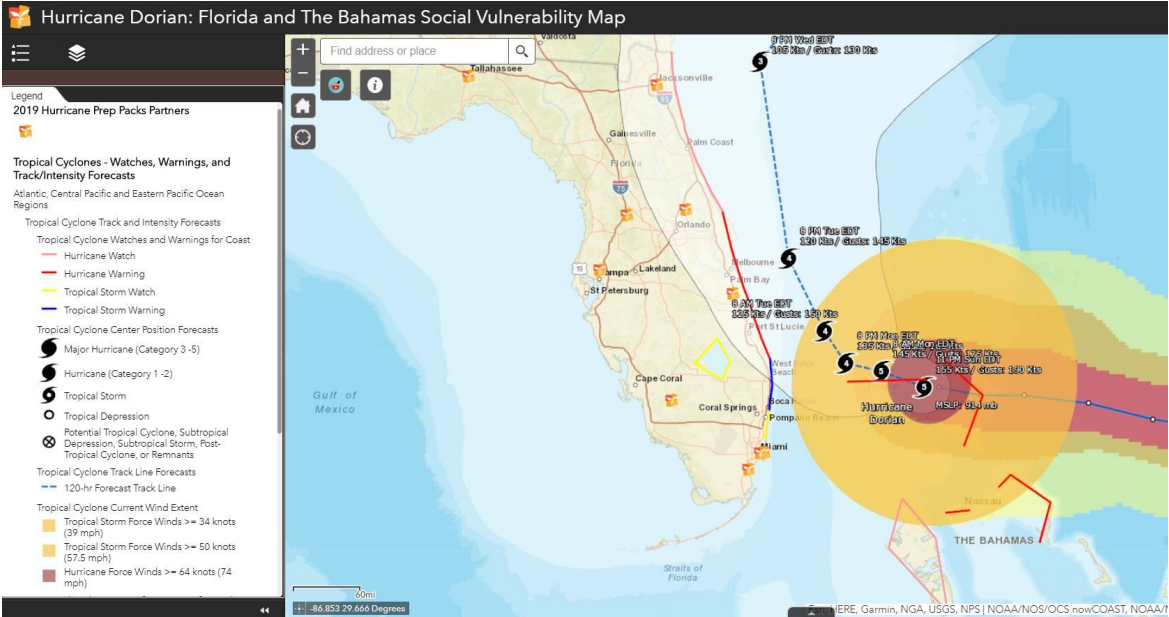
# Volcanic Explosion in St Vincent and the Grenadines 2021



*Density of children under 5 and shelters relative to population change within 1 km of each shelter site in St Vincent (Sources: St. Vincent government and Facebook Data for Good)*



# Hurricane Dorian 2019



# Mobility Dataset Comparison

Name	Access	Spatial Coverage	Spatial Resolution	Temporal Resolution	Sample
Commuting Zones	Public (HDX)	Global	Admin level 2	6 Months	All Facebook Users with Home and Work Estimates
Movement Distribution	Public (HDX)	Global	Admin level 2	24 Hours (monthly uploads to HDX)	Facebook Users who have opted-in to Location Services
Facebook Population During Crisis	Controlled Access (Partner Portal)	Crisis Area & Time	2.4 km <sup>2</sup> Tile	8 Hours	Facebook Users who have opted-in to Location Services
Facebook Movement During Crisis	Controlled Access (Partner Portal)	Crisis Area & Time	2.4 km <sup>2</sup> Tile	8 Hours	Facebook Users who have opted-in to Location Services
Colocation Maps	Controlled Access (Partner Portal)	Global	Admin level 2	7 Days	Facebook Users who have opted-in to Location Services
Activity Space Maps	Controlled Access (Custom)	Global	1.7 km <sup>2</sup> Tile	3 Weeks	Facebook Users who have opted-in to Location Services
International Travel Patterns	Controlled Access (Partner Portal)	Global	Country	24 Hours	Facebook Users who have opted-in to Location Services

## OTHER RESOURCES

### Self-paced tutorials

Self-paced tutorials are available to help access, analyze, and visualize different datasets.

These range from beginner to advanced tutorials on public and controlled-access datasets.

### Live facilitated tutorials

Beginner-level tutorials can be offered in virtual or in person workshops to build the technical skills needed to access, analyze, and visualize Data for Good datasets.

### Live onboarding sessions

Live sessions with the Data for Good team are tailored to the specific research and operations needs of partner organizations and serve to introduce relevant datasets available through the Data for Good program, answer questions, etc.

### Slack Community and Help Desk

Maps for Good data users and partners are offered high-touch technical and analytical support to partner organizations via a Slack workspace.

Ping your Data for Good point of contact to get started on any of these, or get started with [this tutorial series for beginners](#).





Thank You!

[dataforgood.facebook.com](https://dataforgood.facebook.com)